



Interiors

by **INEXA**

Craftsmen to the world's finest ships

TNF

Ceilings C80

TNF Ceilings C80 - components

Design freedom

The C80 ceiling system gives maximum freedom with reference to form, colour combination and integrated / concealed lighting fittings.

The ceiling is based upon the popular spline/panel design – but in a new form in which panels are of differing widths, panel direction can easily be changed, and not least, there is a choice of colours for both panel and spline.

In addition, lighting and ventilation appliances can be incorporated in the spline panel, so that they are a discrete aspect of the overall design.

This makes it possible to create all forms of ceiling surface, from simple room/corridor areas to much more complicated »public area« designs such as bars, restaurants, halls etc.



Logically built ceilings

All components in C80 ceilings are self-supporting up to 3 meters and are removable.

In its simplest form the ceiling consists of 2 panel types

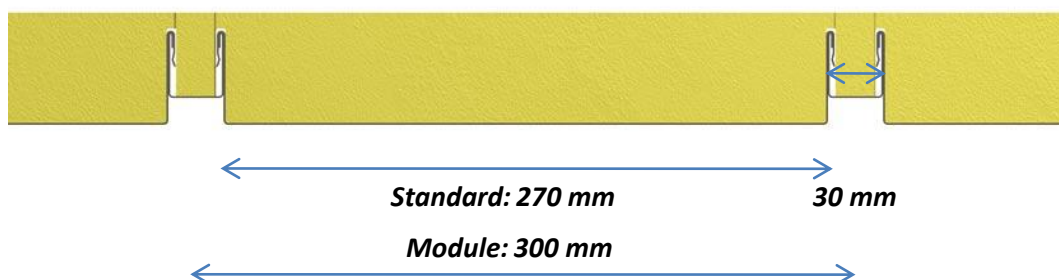
– a broad »female« panel with kerf edge profiles, and a narrower »male-panel« (shadow spline).

The two panel types are mounted alternately and either panel can be removed, rotated laterally, and be re-installed in the same position: a simple and logical construction.

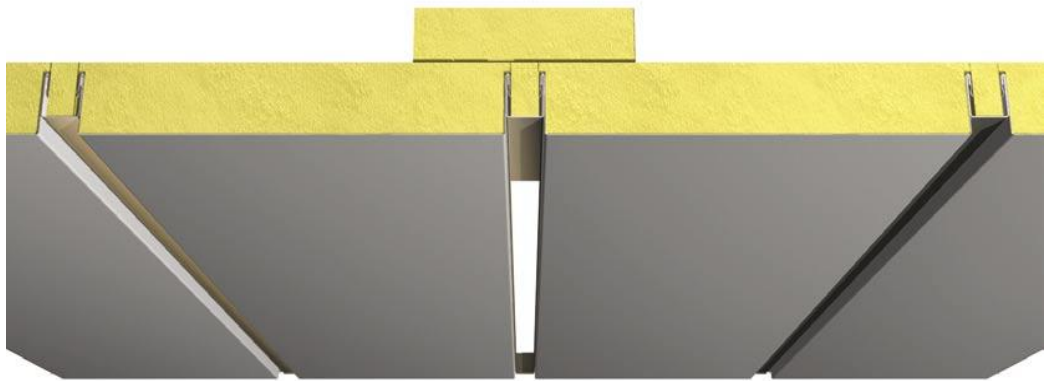
As fire protection, all panels are supplied backed with mineral wool, and only where there are lighting fittings is it necessary to install additional insulation.

Special panels are provided for use with panel direction changes and these cannot be used elsewhere.

Panels are available as standard widths of 270 mm and splines 30 mm. Together these form standard 300mm units, but other panel sizes can be provided. The overall in-built height of the C80 ceiling is 60 mm and it requires less than 50 mm space above the panels for installation/removal. With electrical fitting there must be room for 50 mm fire insulation.



TNF Ceilings C80 - components



Light fittings

It is possible to incorporate lighting on both panel types. In the broader female panel, standard fittings are used which, after installation, are insulated on the upper side.

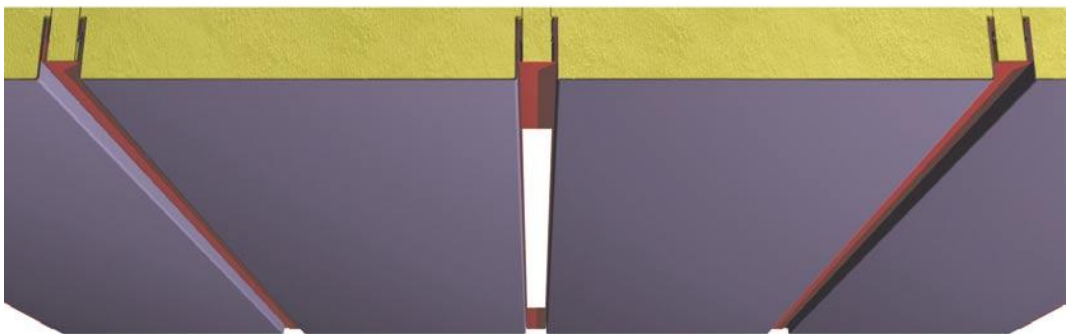
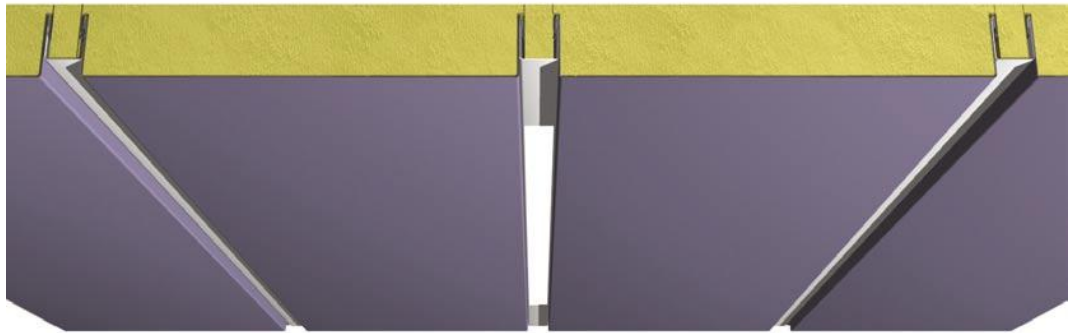
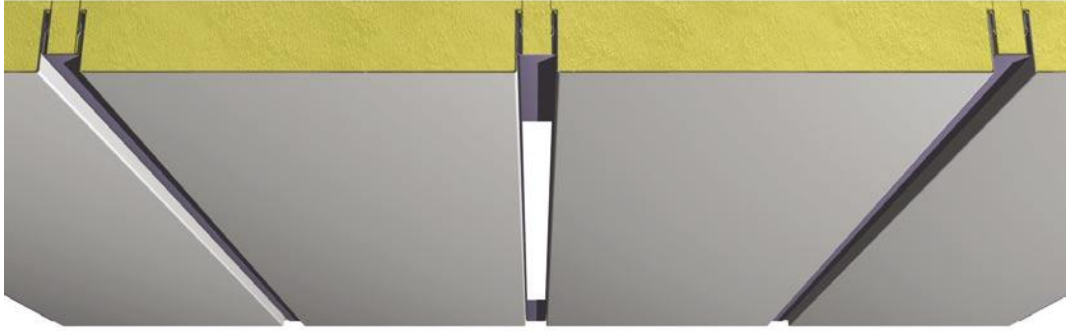
Alternatively, concealed fluorescent lighting units can be mounted on the spline panel – in this case the minimum width will be 40mm. Fluorescent tubes can be either visible or concealed by a matt plastic covering. In all cases, illumination requirements are calculated.

Similarly, ventilation accessories can be installed on both panel types, and as with lighting fittings, the width of the male panel will be 40mm, which is subsequently fire insulated on the upper side.

Other accessories such as fire alarms, loudspeakers and similar can also be concealed in the panels.



TNF Ceilings C80 - colours



Design – colour.

It is possible to work with all colours and colour combinations, using the spline panels as passive or active

components in each design. The ceiling can also be delivered with gloss surfaces, for example, silver, gold or stainless steel.

TNF Ceilings C80 – planning and layout

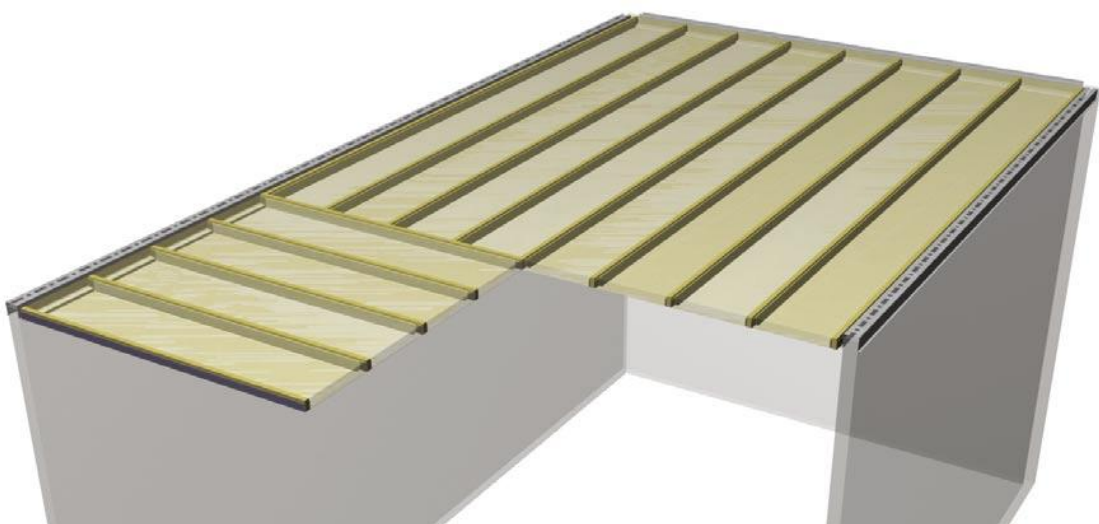


Physical design

The ceiling is finished with spline perimeter panels adjacent to all walls, just as spline panels are used to achieve panel direction transition changes. By this means the ceiling retains its freedom of expression.

Changes in panel directions require a special layout

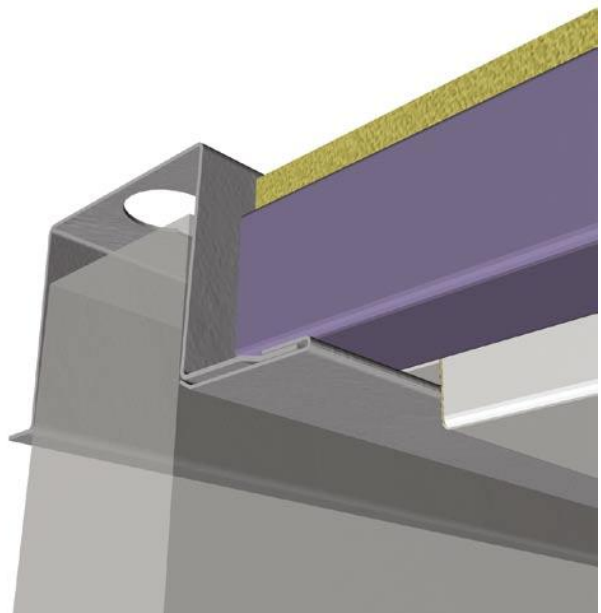
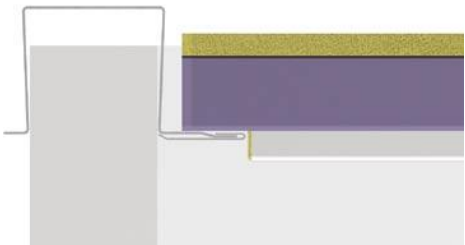
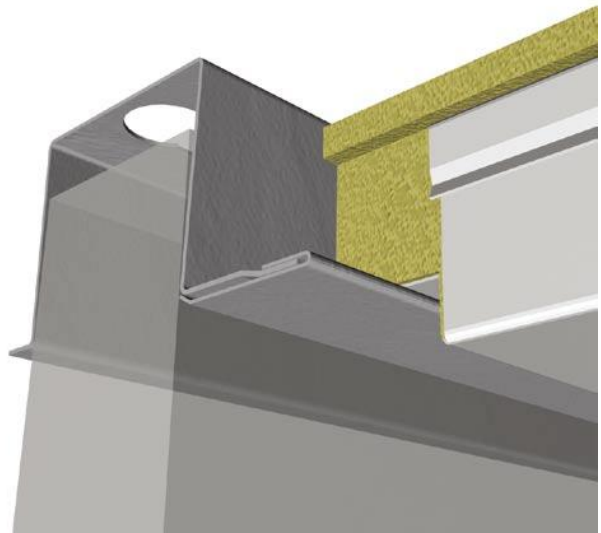
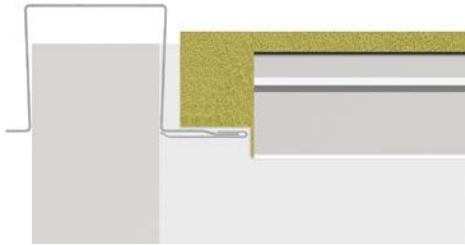
of the abutting panels, but the spline panels are the same width in all directions, and dismantling tasks are likewise optimal. However, to ensure ceiling stability, the first spline panel after a direction change must be strapped in position.



TNF Ceilings C80 – details

Wall mounting

All panels are self-supporting up to 3 m, and they are laid off from either the wall's hat-/ or angle profile. To ensure fire safety, and to minimise vibration, all panels are secured at each end by pop rivets.



TNF Ceilings C80 – ceiling quality features

MAGIC Surface

The surface finish has a built-in extra advantage with the special MAGIC coating which contains no halogens, no toxic fumes and gives a minimum flame spread.

The ceilings are also available with a surface of stainless steel .

For extra protection during handling and installation the ceiling panels carry a peel-off film.

IMO Standard

The TNF ceiling complies with SOLAS safety regulations and is approved by all major authorities and classification societies.

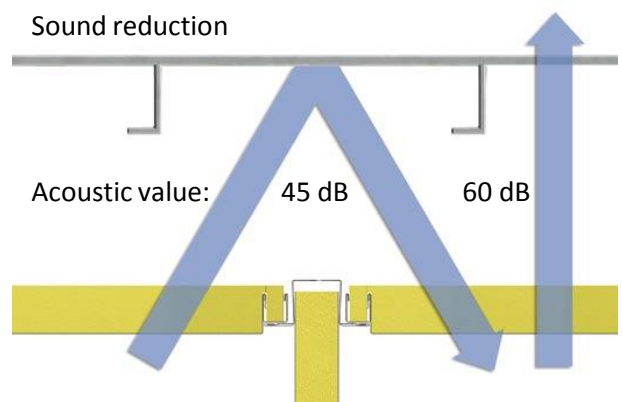
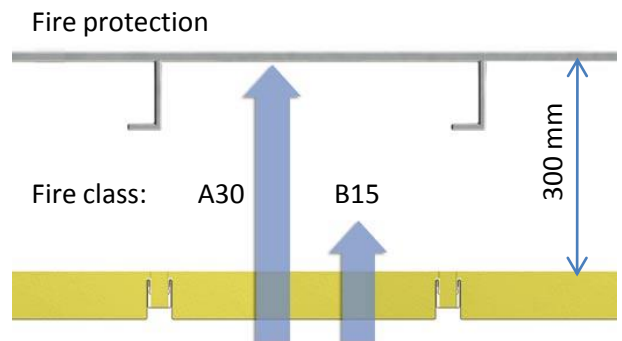
- Each ceiling panel is fully insulated.
- No extra insulation is necessary.

Excellent sound reduction

The ceiling has excellent sound reduction values and therefore contributes to an improved environment in the cabins.

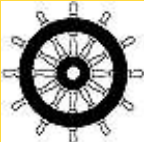
Weight

The weight is 12,4 kg/m²



TNF is the complete high quality accommodation system for all marine interiors. The TNF system includes wall and ceiling panels, doors, floors and wetunits. TNF has been leading the development in marine interiors since 1973. The world famous TNF quality is demonstrated in the environment, which can be designed to provide the ideal conditions for all functions.

TNF

www.inexa.com  info@inexa.com