

The background is a solid bright yellow. On the left side, there are several large, abstract orange geometric shapes. At the top, there is a shape resembling a stylized 'L' with a vertical bar on the left and a horizontal bar on the bottom, with a smaller vertical bar extending upwards from the horizontal bar. Below this is a solid horizontal orange bar. Further down is a large, thick, diagonal orange bar that starts from the left edge and extends towards the center. At the bottom left, there is another 'L' shaped orange bar, similar to the one at the top but with a different proportion.

Interiors

by **INEXA**

Craftsmen to the world's finest ships

TNF

Profile Selection

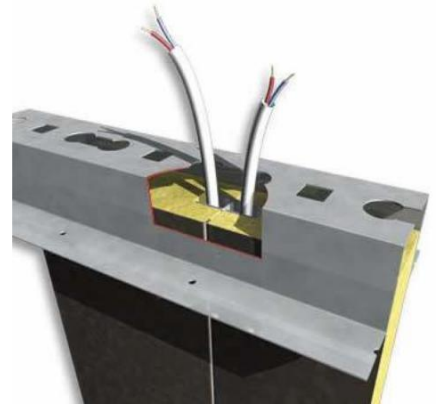
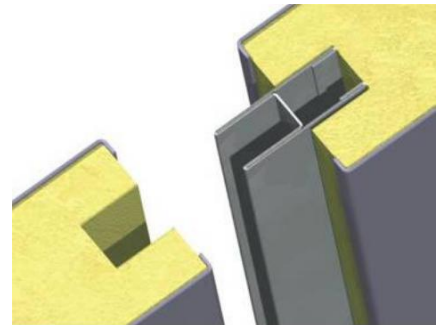
TNF Profiles



Inexa's manufacturing base is equipped for the manufacturing of all products in the TNF product range; wall and ceiling panels, doors, wetunits, profiles, etc. Among others there is a complete department for all kinds of steel processing for TNF Profiles.

The factory is certified by DNV for ISO 9001 and has the DNV MED-D certificate for manufacturing.





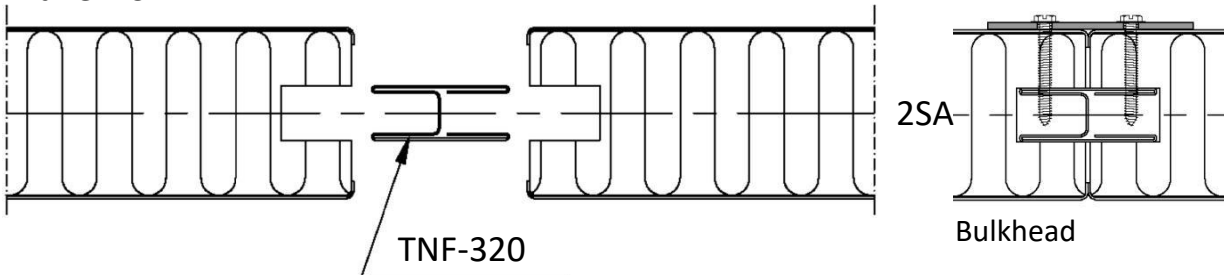
The TNF profiles are the hidden secrets of the perfect accommodation system. In most cases the role of the profile is to “function but not be seen”. The TNF profiles have been developed in close cooperation with customers since 1973 in order to be the optimal link between walls, ceilings, doors, wetunits, windows, floors and other elements of the interior.

When the products leave Inexa’s manufacturing base, the TNF package is complete. The profiles will be delivered together with the panels and other more

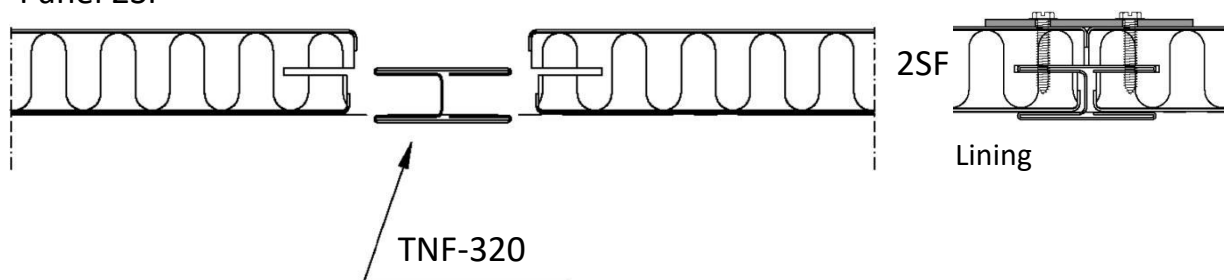
visible products to make the installation smooth and efficient.

The brilliant TNF H-profile TNF 320 is a typical example of an “intelligent” profile. The same profile is used for many different functions in the TNF accommodation system. The H-profile has a stiff beam structure and makes the strongest joint in the market. As an added value the H-profile can be used as a reinforcement for installments on the walls, and in all 50 and 100 mm panels the H-profile can be used as a channel for electrical cables.

Panel 2SA



Panel 2SF



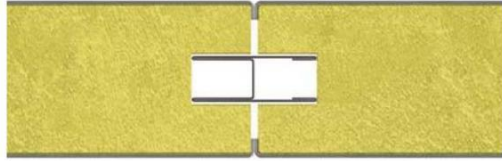
Vertical profiles

TNF 320

TNF 320 Standard joint for 25/50 mm panels
B-Class
Finish: Galvanized
Weight: 0,73 kg/m
Standard maximum length: 3000 mm



Examples of use:



50 mm Standard Joint, Cableway 12 mm \varnothing . TNF Panel, 50 mm thickness. PVC-coated steel, MAGIC, stainless steel or galvanized steel surfaces. Core of Rockwool mineral wool.



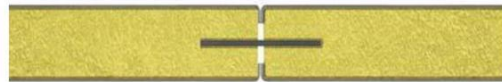
25 mm Standard Joint, B-Class. TNF Panel, 25 mm thickness. PVC-coated steel, MAGIC, stainless steel or galvanized steel surfaces. Core of Rockwool mineral wool.

TNF 313

TNF 313 Standard joint for 25 mm panels C-Class
Finish: Galvanized
Weight: 0,35 kg/m
Standard maximum length: 3000 mm



Example of use:



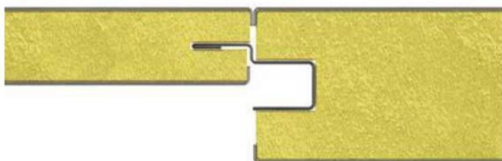
25 mm Standard Joint, C-Class. TNF Panel, 25 mm thickness.

TNF 322

TNF 322 Transition profile
Finish: Galvanized
Weight: 0,37 kg/m
Standard maximum length: 3000 mm



Example of use:



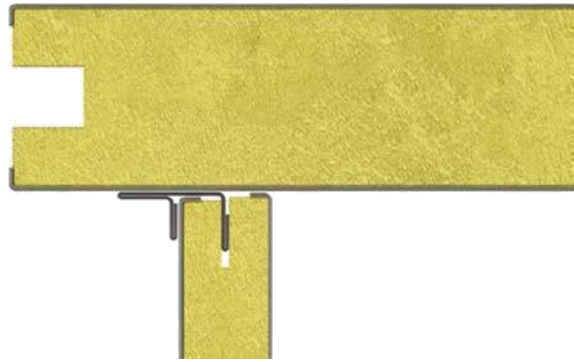
Joining profile, TNF 322 50/25 mm joint.

TNF 326

TNF 326 Concealed profile for 25 mm panels
Finish: Galvanized
Weight: 0,4 kg/m
Standard maximum length: 3000 mm



Example of use:



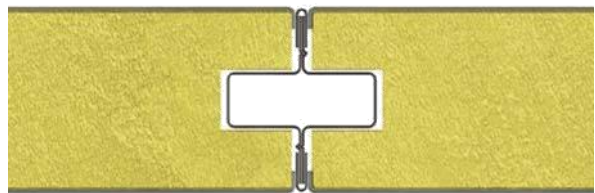
Concealed profile for 25 mm lining panels.
Galvanized side / Decorative side.

TNF 333

TNF 333 Detachable profile for 50 mm partition.
Finish: Galvanized with 2 decorative cover clips.
Weight: 1,0 kg/m
Standard maximum length: 3000 mm



Example of use:



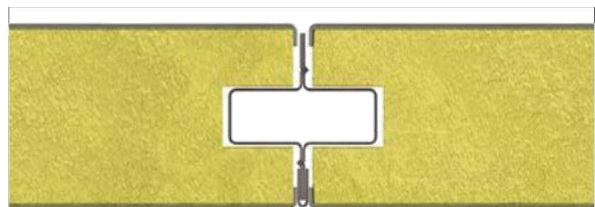
For detachable panels - 2 decorative sides.

TNF 334

TNF 334 Detachable profile for 50 mm lining.
Finish: Galvanized with 1 decorative cover clip.
Weight: 0,89 kg/m
Standard maximum length: 3000 mm



Example of use:



decorative sides

For detachable panels - 1 decorative side.

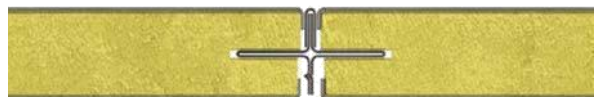
TNF 340

TNF 340 Detachable profile for 25 mm lining.
Finish: Galvanized with 1 decorative cover clip.
Weight: 0,50 kg/m
Standard maximum length: 3000 mm



Example of use:

decorative sides



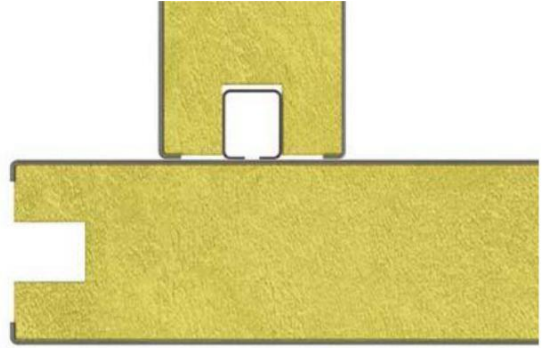
Removable 25 mm panels - 1 decorative side.

TNF 308

TNF 308 Tee tongue profile for 50mm panels.
Finish: Galvanized.
Weight: 0,54 kg/m
Standard maximum length: 3000 mm



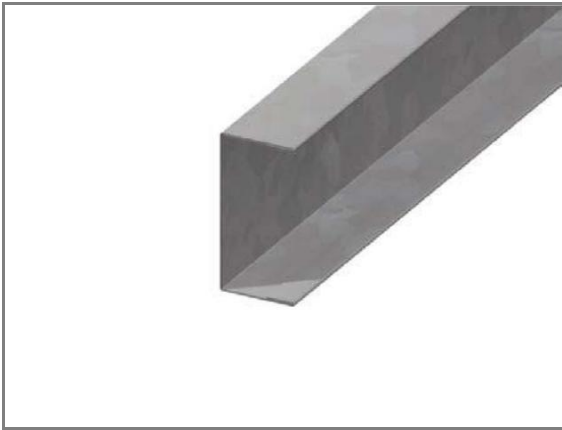
Example of use:



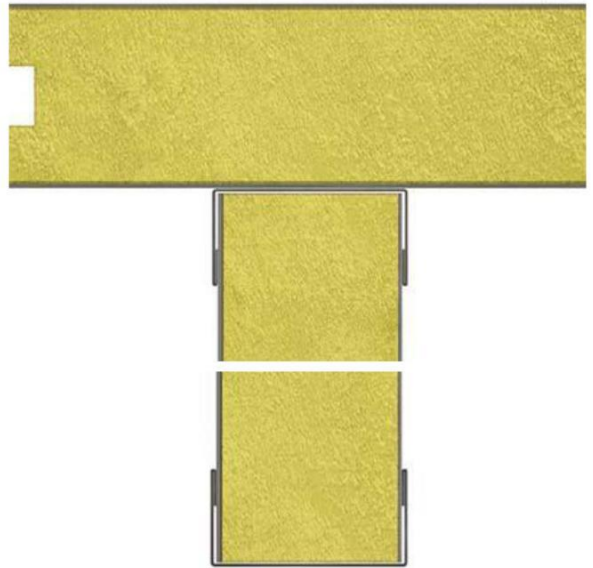
Tee tongue profile fixed by screws.

TNF 290

TNF 290 End cap profile for 50mm panels.
Finish: Decorative.
Weight: 0,57 kg/m
Standard maximum length: 3000 mm



Examples of use:



Profile TNF 290 fixed by:

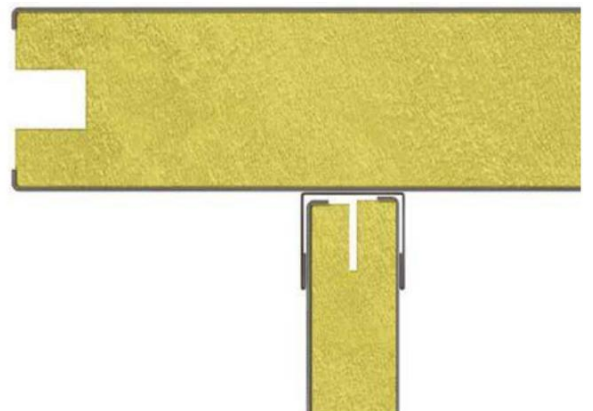
1. selftapping screws no. 8
2. 4 mm steel pop rivets per 300 mm

TNF 289

TNF 289 End cap profile for 25mm panels.
Finish: Galvanized.
Weight: 0,45 kg/m
Standard maximum length: 3000 mm



Example of use:



U-profile TNF 289 fixed by:

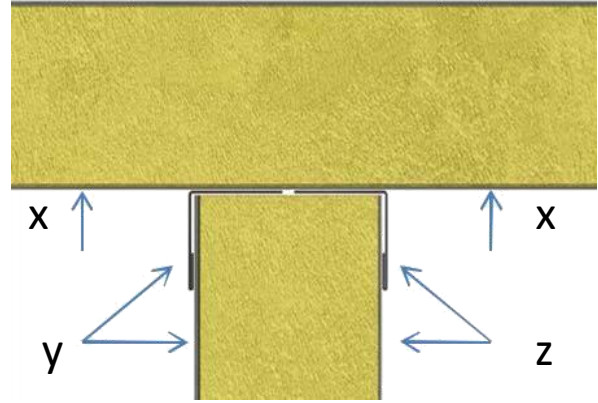
1. selftapping screws no. 8
2. 4 mm steel pop rivets per 300 mm

TNF 280

TNF 280 Half end cap profile for 50mm panels.
Finish: Decorative.
Weight: 0,27 kg/m
Standard maximum length: 3000 mm



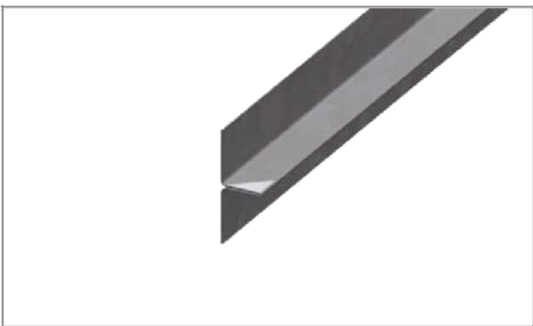
Example of use:



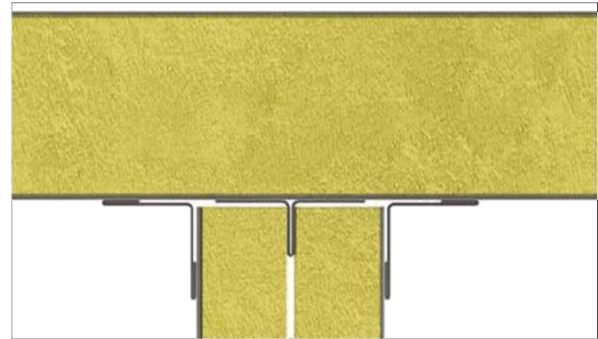
Colour x
Colour y
Colour z

TNF 305

TNF 305 Spacer for maintaining airgap in high noise reducing panel when cut to fit.*
Finish: Galvanized
Weight: 0,30 kg/m
Standard maximum length: 3000 mm



Example of use:



Filler, TNF 305 To be placed into position in cut panel before this is installed.

Inside Corner profile TNF 220 fixed by:

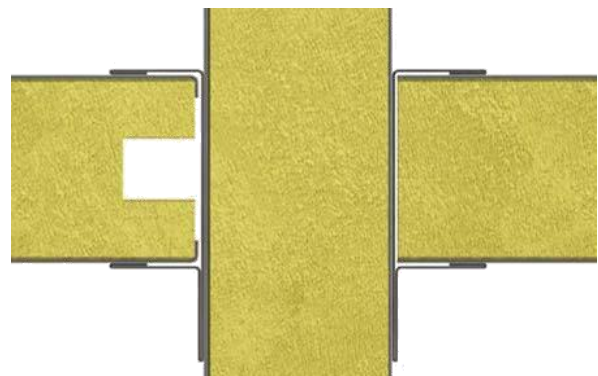
1. Selftapping screws no. 8
2. 4 mm steel pop rivets per 300 mm

TNF 216

TNF 216 Inside corner profile for 50mm panels.
Finish: Decorative
Weight: 0,8 kg/m
Standard maximum length: 3000 mm



Example of use:



TNF Panel-cut

Corner Profile, TNF 216 fixed by:

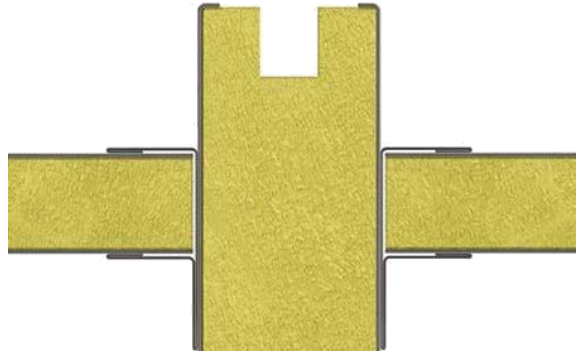
1. Selftapping screws no. 8
2. 4 mm steel pop rivets per 300 mm

TNF 215

TNF 215 Inside corner profile for 25 mm panels.
Finish: Decorative
Weight: 0,68 kg/m
Standard maximum length: 3000 mm



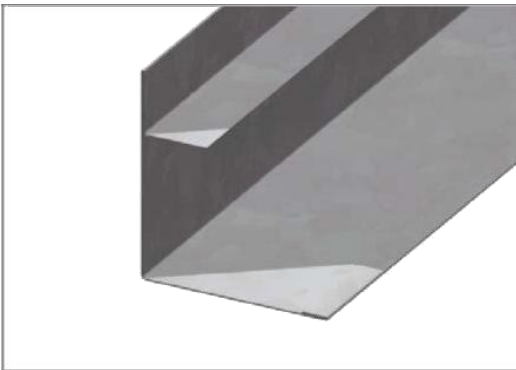
Example of use:



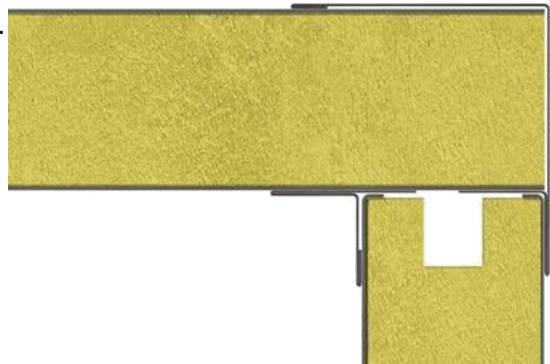
TNF Panel-cut
Corner Profile, TNF 215 fixed by:
1. Selftapping screws no. 8
2. 4 mm steel pop rivets per 300 mm

TNF 231

TNF 231 Outside corner profile for 50 mm panels.
Finish: Decorative
Weight: 0.98 kg/m
Standard maximum length: 3000 mm



Example of use:



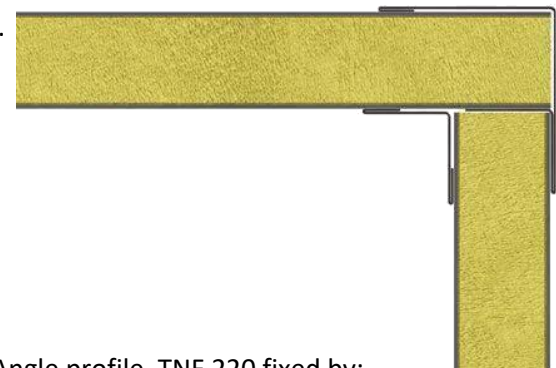
Inside Corner profile, TNF 221 fixed by:
1. self tapping screws no. 8
2. 4 mm steel pop rivets per 300 mm
Outside Corner profile TNF 231 - fixed as
inside Corner profile.

TNF 232

TNF 232 Outside corner profile for 25 mm panels.
Finish: Decorative
Weight: 0,73 kg/m
Standard maximum length: 3000 mm



Example of use:



Angle profile, TNF 220 fixed by:
1. self tapping screws no. 8
2. 4 mm steel pop rivets per 300 mm
Outside Corner profile TNF 232 - fixed as
inside Angle profile.

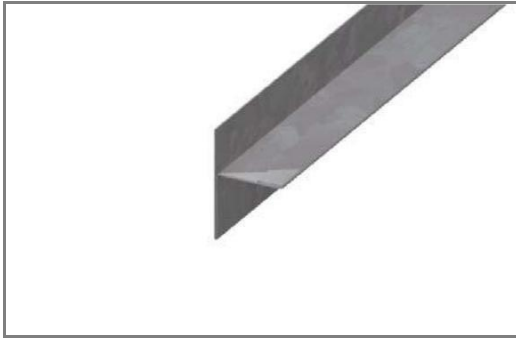
TNF 221

TNF 221 Tee profile.

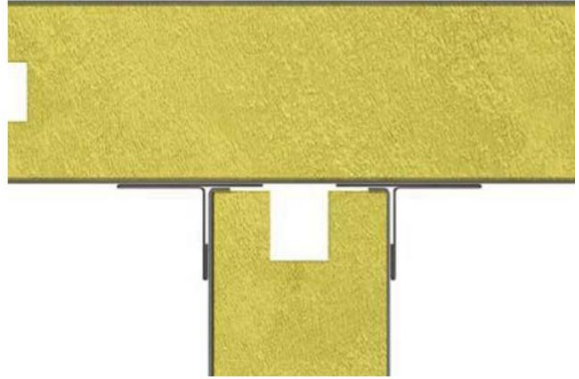
Finish: Decorative

Weight: 0,46 kg/m

Standard maximum length: 3000 mm



Example of use:



Tee profile, TNF 221 fixed by:

1. self tapping screws no. 8
2. 4 mm steel pop rivets per 300 mm

TNF 220

TNF 220 Concealed angle profile.

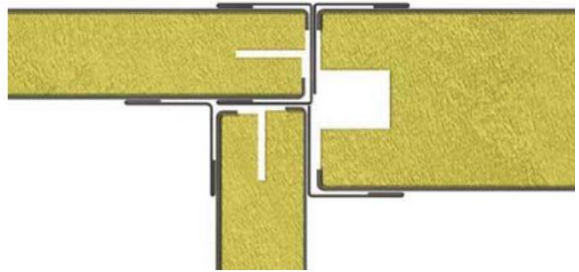
Finish: Decorative

Weight: 0,32 kg/m

Standard maximum length: 3000 mm



Example of use:



TNF 220 Concealed angle profile fixed by:

1. self tapping screws no. 8
2. 4 mm steel pop rivets per 300 mm

TNF 290 End cap profile and TNF 280 Half end cap profile - fixed as Concealed angle profile.

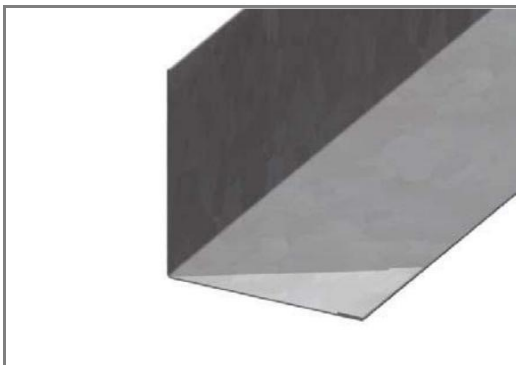
TNF 230

TNF 230 Angle profile.

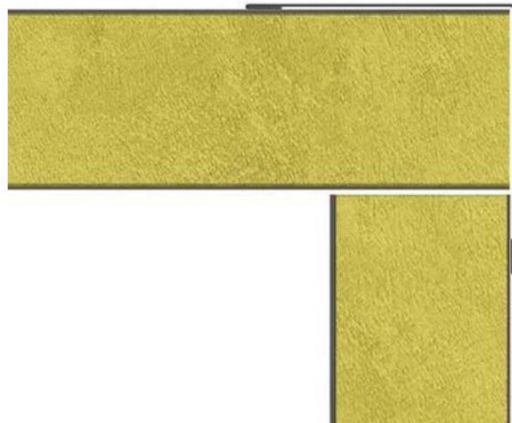
Finish: Decorative

Weight: 0,79 kg/m

Standard maximum length: 3000 mm



Example of use:

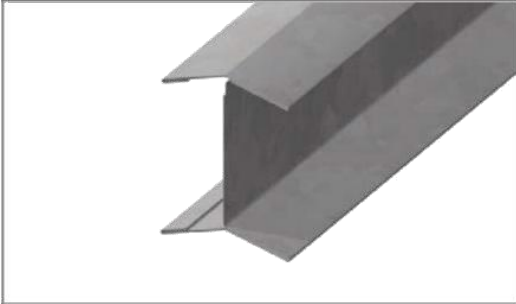


TNF 230

To be fixed with poprivets.

TNF 505

TNF 505 Elbow profiles for 50mm panels.
Angle variable from 90 to 180 –please specify
Finish: Decorative or galvanized
Weight: 1,17 kg/m
Standard maximum length: 3000 mm
Two parts to be assembled at site



Example of use:



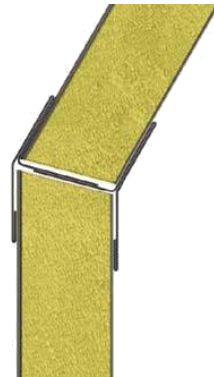
Elbow profile TNF 505 fixed by:
1. Selftapping screws nr. 5
2. 4 mm pop rivets per 300 mm

TNF 504

TNF 504 Elbow profiles for 25mm panels.
Angle variable from 90 to 180 –please specify
Finish: Decorative or galvanized
Weight: 0,97 kg/m
Standard maximum length: 3000 mm
Two parts to be assembled at site



Example of use:

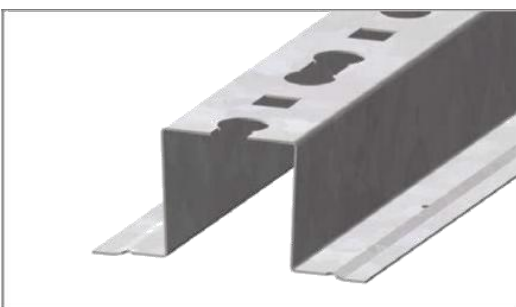


Elbow profile TNF 504 fixed by:
1. Selftapping screws nr. 5
2. 4 mm pop rivets per 300 mm

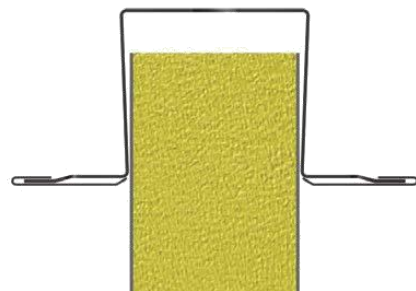
TNF Top profiles

426

TNF 426 for 50mm panels.
Double flange profile for partitions.
Nominal length: 2400 mm
Average weight: 1,7 kg/m



Example of use:



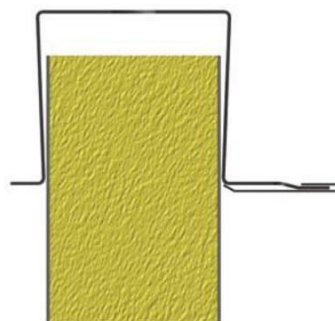
TNF 426
To be fixed with poprivets.
Coverprofile TNF 619

TNF 446

TNF 446 for 50mm panels.
Single flange profile for linings and facings.
Nominal length: 2400 mm
Average weight: 1,5 kg/m



Example of use:



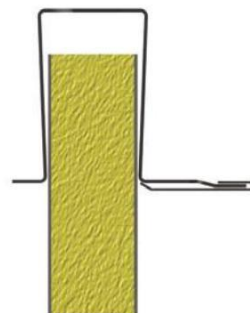
TNF 446 Topprofile for 50 mm panels.
To be fixed with poprivets.
Coverprofile TNF 619

TNF 445

TNF 445 for 25mm panels.
Single flange profile for linings and facings.
Nominal length: 2400 mm
Average weight: 1,32 kg/m



Example of use:



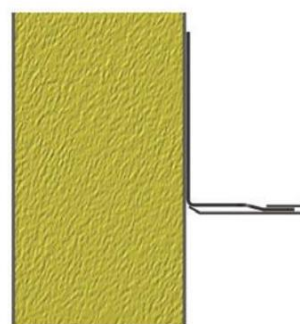
TNF 445 Topprofile for 25 mm panels.
To be fixed with poprivets.
Coverprofile TNF 619

TNF 444

TNF 444 for deck to deck bulkheads or to accommodate different ceiling heights between rooms.
Nominal length: 2400 mm
Average weight: 0,64 kg/m



Example of use:



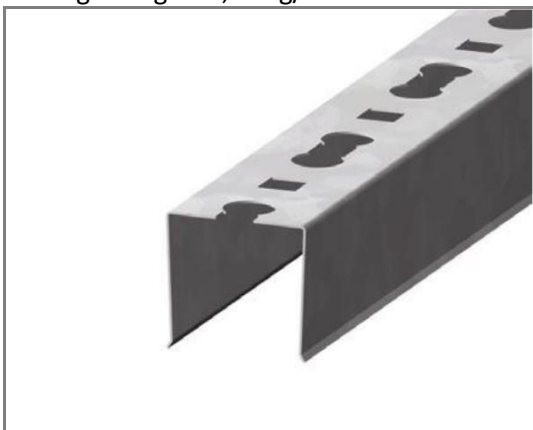
TNF 444 Topprofile.
To be fixed with poprivets.
Coverprofile TNF 619

TNF 431

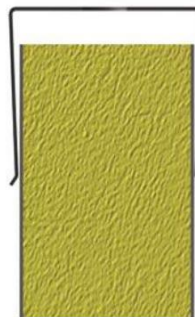
TNF 431 Topprofile for 50 mm panels.

Standard length: 2400 mm

Average weight: 1,22 kg/m



Example of use:



TNF 431 Topprofile for 50 mm panels.

To be fixed with poprivets.

TNF 430

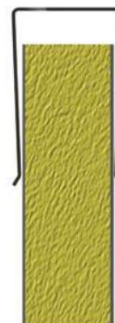
TNF 430 Topprofile for 25 mm panels.

Standard length: 2400 mm

Average weight: 1,04 kg/m



Example of use:



TNF 430 Topprofile for 25 mm panels.

To be fixed with poprivets.

TNF 619

TNF 619 Cover profile.

Standard length: 2400 mm

Weight: 0,21 kg/m



TNF 607

TNF 607 Inside corner cap.

Weight: 0,03 kg/pc



TNF 608

TNF 608 Outside corner cap.

Weight: 0,02 kg/pc



Bottom profiles

TNF 401

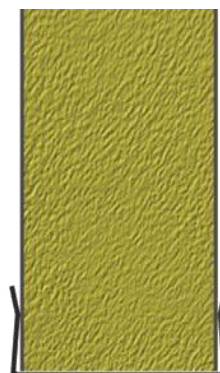
TNF 401 Bottom profile for 50 mm panels.

Nominal length: 2400 mm

Average weight: 0,92 kg/m



Example of use:



TNF 400

TNF 400 Bottom profile for 25 mm panels.

Nominal length: 2400 mm

Average weight: 0,67 kg/m



Example of use:



Splice profiles

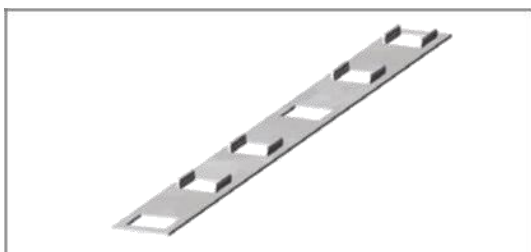
TNF 409

TNF 409 Profile splice

For assembling of top and bottom profiles.

Length: 275 mm

Weight: 0,045 kg/pc



Ceiling profiles

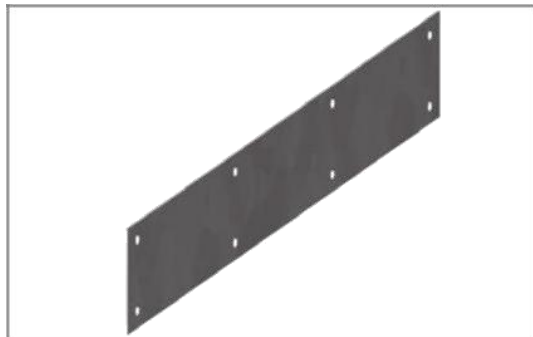
TNF 639

TNF 639 T-carrier.
Nominal length: 3000 mm
Weight: 1,27 kg/m



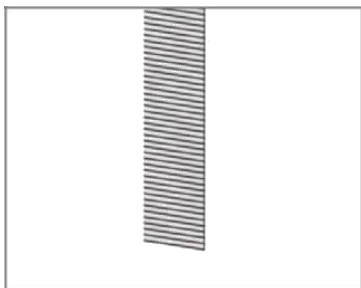
TNF 621

TNF 621 Splice for T-carrier.
Length: 320 mm
Weight: 0,09 kg/pc



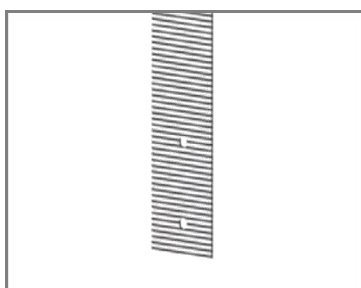
TNF 630

TNF 630 Hanger Upper part
Length: 600 mm



TNF 631

TNF 631 Hanger Lower part
Length: 150 mm



TNF 632

TNF 632 Hanger Locking device



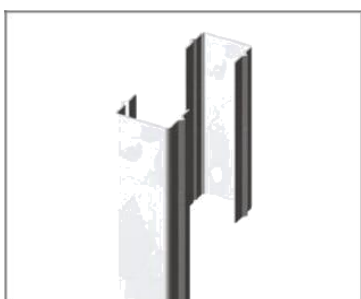
Cable covers

TNF 530 fixture

Placement every 300 mm
Finish: galvanized
Weight: 20g per fixture
Width: 25 mm

TNF 531

Profile for TNF530
Maximum length: 3000 mm
Finish: Decorative
Weight: 0,3 kg/m

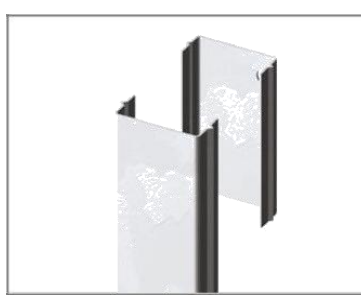


TNF 532 fixture

Placement every 300 mm
Finish: galvanized
Weight: 25g per fixture
Width: 40 mm

TNF 533

Profile for TNF532
Maximum length: 3000 mm
Finish: Decorative
Weight: 0,4 kg/m



TNF 534 fixture

Placement every 300 mm
Finish: galvanized
Weight: 35g per fixture
Width: 60 mm

TNF 535

Profile for TNF534
Maximum length: 3000 mm
Finish: Decorative
Weight: 0,5 kg/m



Consumption of profiles

The TNF 2S panel system consists of an assortment of panels and a selection of profiles required to install the panels. When quoting the TNF 2S panel system, prices may be stated for panels and profiles separately, or as a system price. Quoted as a system, the prices for the different types of panels include the following profiles, unless otherwise requested in the inquiry.

Top and bottom profiles

Prices include the number of linear metres of top and bottom profiles that equals the linear metres of panels with an allowance of up to 10% for cutting waste. Linear metres of the different top and bottom profiles are divided by 3.9 (length of profiles) to arrive at the number of profiles. Profiles ordered in excess of the actual linear metres required plus 10% will be charged separately.

Jointing profiles

Prices include 7 jointing profiles for every 8 panels, which allow for the average wall to be 4200 mm long.

The ninth joint is a corner or Tee joint. Excess jointing profiles will be charged separately.

Decorative profiles

Prices include visible decorative profiles for corner joint and Tee joints, and for other locations where the standard panels system requires the use of visible profiles or where the profiles are necessary for the installation of the panels. Decorative profiles used in connection with door constructions, for edge covering of window boxes and similar applications are not included in the system price.

The TNF assortment of profiles

This brochure contains the standard profiles and accessories. Other types of profiles may be required and will be designed to suit the individual purposes. Special profiles are not part of the standard panel system and will be charged separately.

TNF is the complete high quality accommodation system for all marine interiors. The TNF system includes wall and ceiling panels, doors, floors and wetunits. TNF has been leading the development in marine interiors since 1973. The world famous TNF quality is demonstrated in the environment, which can be designed to provide the ideal conditions for all functions.

TNF



www.inexa-tnf.com

info@inexa-tnf.com